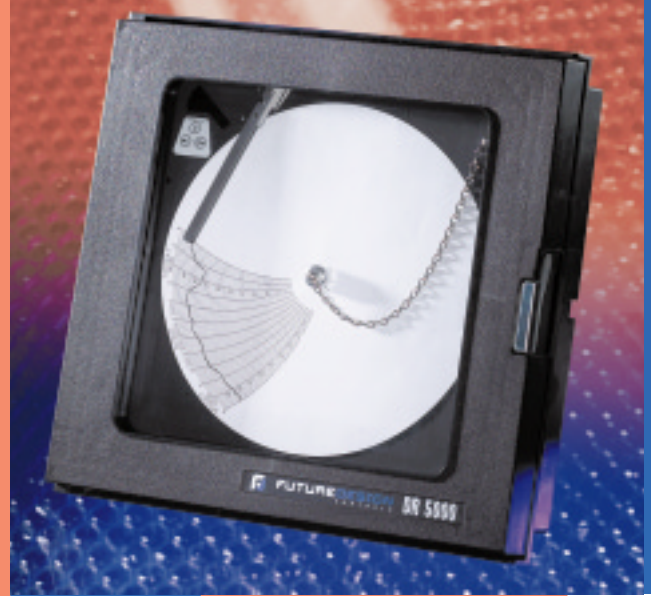


You Asked, We Delivered!

Future Design's DR 5000 offers the best of both worlds, ink cartridge or thermal printing!

The DR 5000 is a circular chart recorder like no other. Programmable alarm options combined with "ease of setup" provide the flexibility required for multiple recording applications. The ink style DR 5000 is the first recorder to "self document" setup configuration and can operate using standard or competitive charts, another first in the industry. Eliminate "multi-vendor" chart inventories while reducing operator confusion. Protect your process with the DR 5000 battery backup option, continuous recording for up to 48 hours in the event of power loss .

The thermal print version offers a single chart inventory for all of your recording needs. "Print your own" chart technology includes real time trend and digital data directly on your historical records. No more confusion when replacing charts. The DR 5000 – the right choice for recording.



DR 5000

DR 5000 CIRCLE CHART RECORDER

- Ink or "Print Your Own" chart style
- No manual required for setup
- No "dip switches" to set during configuration
- Uses standard or competitive charts
- Up to 48 hrs of recording during power loss
- Latching or Non-latching relays
- UL, CUL, CE
- "Self Documents" setup configuration

DR 5000 SPECIFICATIONS

POWER

Line Voltage: 110/220VAC, 50/60Hz
Power Consumption: 15 VA maximum

INPUT

Thermocouple (T/C): Type J, K, T, R, B, S,
RTD: PT 100 ohm RTD (385 curve)
Linear: 4-20 mA, 1-5 VDC, 0-5 VDC
Range: Per table in manual
Common Mode Rejection: > 120dB at 60 Hz
Cold Junction Accuracy: ± 0.2°C @ 25°C ambient
Ambient Error: ± 0.01% span/°C from 25°C ambient
Isolation: inputs share common ground on 2 pen units
Input Impedance: Linear = 249 ohm/ TC = 470Kohm

RECORDING

Chart Size: 10"
Recording Accuracy: ± 0.5% of span (100 division span)
Sensor Break: Full scale Pen < 10 seconds
Chart Speed: Configurable
Input Filtering: Programmable up to 120 seconds

PROCESS DISPLAY OPTION

Red LED, 4 digit, .0,40"

OPTIONS

Relay: DPDT, 1.0 Amps @ 120 VAC resistive
Relay Program: Process, Band, Non-latching, Latching
Error Protection: De-energized during sensor break
Hysteresis: Set at 2 units, activation is safe sided
Battery Back up:
Ink Style: Up to 48 hours of recording (optional)
Thermal Print Style: Maintains real time clock only

ENVIRONMENTAL AND PHYSICAL

Operating Temperature: 0 to 60°C
Storage Temperature: -40 to 65°C
Humidity: 0-90% RH (non-condensing)
Vibration: 0.3 to 100Hz @ 0.2g
Mounting: ± 20 degrees of vertical
 ± 10 degrees of horizontal
Moldings: Fire retardant Noryl w/acrylic window
Panel Rating : Nema 3 std(Nema4 option)
Dimensions: 14.0" (H) x 14.0" (W) x 3.8" (D)
Panel Cutout: Industry Standard 12.7" x 12.7"
Weight: 7 pounds maximum

ORDERING INFORMATION

Enter a number in each box which corresponds to the specifications you want when ordering the DR 5000.

DR 5000

--	--	--	--	--	--	--	--

POWER INPUT

- 1: 110/220VAC 50/60 Hz Selectable

RECORDING STYLE

- 1: 1 Pen Ink
- 2: 2 Pen Ink
- 3: Thermal print recorder ***
THERMAL RECORDER IS SINGLE OR DUAL CHANNEL PROGRAMMABLE VIA FRONT KEYPAD

OUTPUTS

- 0: None
- 1: 1 Relay, DPDT 1A/120VAC resistive
- 2: 2 Relay, DPDT 1A/120VAC resistive *

DISPLAY OPTIONS

- 0: None
- 1: LED Process Display

CHART OPTIONS

- 1: 10" Counterclockwise Rotation (standard)
- 2: 10" Clockwise Rotation
Thermal recorder is only available with counterclockwise rotation

ENCLOSURE OPTIONS

- 1: Standard
- 2: Nema 4
- 3: Platen Mount

SPECIAL OPTIONS

- 0: None
- 1: Battery Backup**

- * Not available on single pen ink model.
- ** 48 hours of continuous recording on ink style recorders.
- ** Battery back-up for real time clock is standard on thermal units. Thermal recorder will not operate on battery alone. Use order code "O".
- *** Thermal print recorder is configurable for single or dual channels via the front keypad. Two programmable inputs are standard on the thermal recorder.

UL\CUL FILE# E232762, E232369

CE

UL Pending on Thermal Units.

