

Print it any way you want it!

Future Design's DR 5000 is a one or two channel, micro-processor based thermal print chart recorder.

A single stylus printhead produces up to two analog traces and prints data on a blank heat sensitive chart. Both traces share the same "Time Line" thereby eliminating pen alignment errors consistent with ink type chart recorders.

Since the DR 5000 prints it's own chart, trace error due to variations between chart manufacturers as well as ink pen replacement is eliminated. Variations in temperature and humidity will not affect the thermal printing since all trace, scale, time and divisions are printed by the thermal print head.

- *No ink pens to change*
- *No special charts to order*
- *"Self Documents" setup configuration*
- *No jumpers or dip-switches use during setup!*



THERMAL

DR 5000 THERMAL CHART RECORDER

One Channel: \$949.00 List

Two Channel: \$999.00 List

DR 5000 THERMAL RECORDER

▶ USER CONFIGURABLE

Using our unique setup chart, users can set or alter operating parameters to fit their requirements. Input type, range, scales, alarms and time are all configurable by the user. A typical recorder setup takes less than 5 minutes and does not require the reference manual to complete.

▶ ALL PURPOSE CHART

A blank thermal chart eliminates the need for ordering and stocking several types of charts. Users can design their own chart to match specific applications.

▶ ONE OR TWO CHANNELS

One or two channel units monitor process variables from a variety of sensors. Two channels units reduce panel space requirements.

▶ SINGLE STYLUS PRINTING

A single stylus thermal print head prints all chart data including time and trend lines. This automatically compensates for chart width variations caused by changes in the ambient relative humidity as well as eliminates the "hysteresis" error found in chart recorders using ink chart marking.

▶ ALARM OUTPUTS

One optional DPDT alarm relay per channel is available.

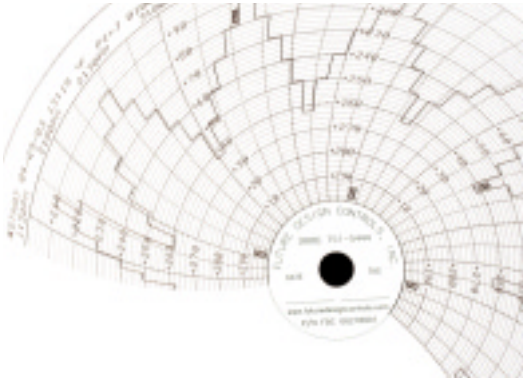
▶ TIME/DATE

Real-time clock, dates and time of printing (hour, minutes, date and year). Self printing time/date printing eliminates any unauthorized operator chart advancement.

DR 5000 THERMAL FEATURES

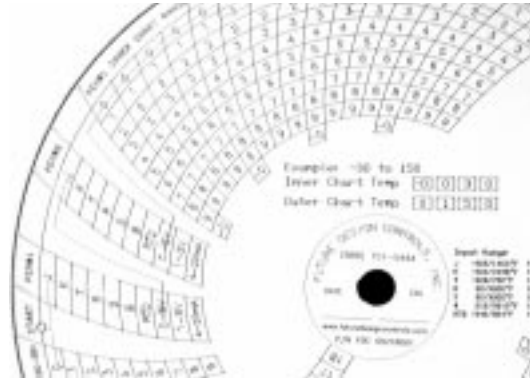
INDUSTRY'S LOWEST COST THERMAL RECORDER!

No More Preprinted Charts!

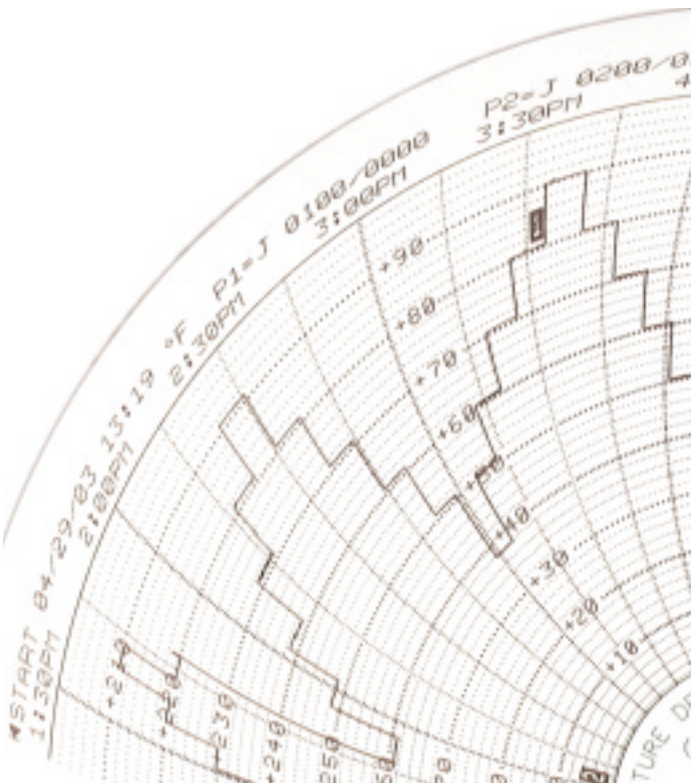


A box of blank DR5000 charts is all that is needed to produce virtually any chart range required! DR5000 charts eliminate the need for custom pre-printed chart ranges thereby reducing storage and inventory.

Quick and Easy Configuration!



The DR5000 configuration usually takes 5 minutes or less! The thermal pen actually documents the configuration parameters right on the setup chart. Current recorder configuration can be checked at a glance!



DR5000 Self Printing Thermal Chart

- Hi-accuracy since chart start date/time is printed each chart change.
- Pen/range configuration printed on every chart for "at a glance" configuration check.
- Tamperproof operation. Chart can not be moved forward to create a chart.
- Clear identification marking for each input(trace),
- Configurable range and scale for each input.
- Inputs programmable for T/C, RTD, Volts and mA.
- No ink pens to purchase or replace.
- 2 year expected life for thermal print head printing a typical chart per day.
- Reduce chart installation errors related to maintaining multiple chart inventories.

Current Technology = Lower Cost For Customer

The DR5000 thermal, like all Future Design Control products, utilizes the most recent technology in microprocessors, surface mount technology, assembly and testing to provide products with the most sought after features, benefits and reliability. This allows us to provide great products to the market place at ultra competitive prices.

